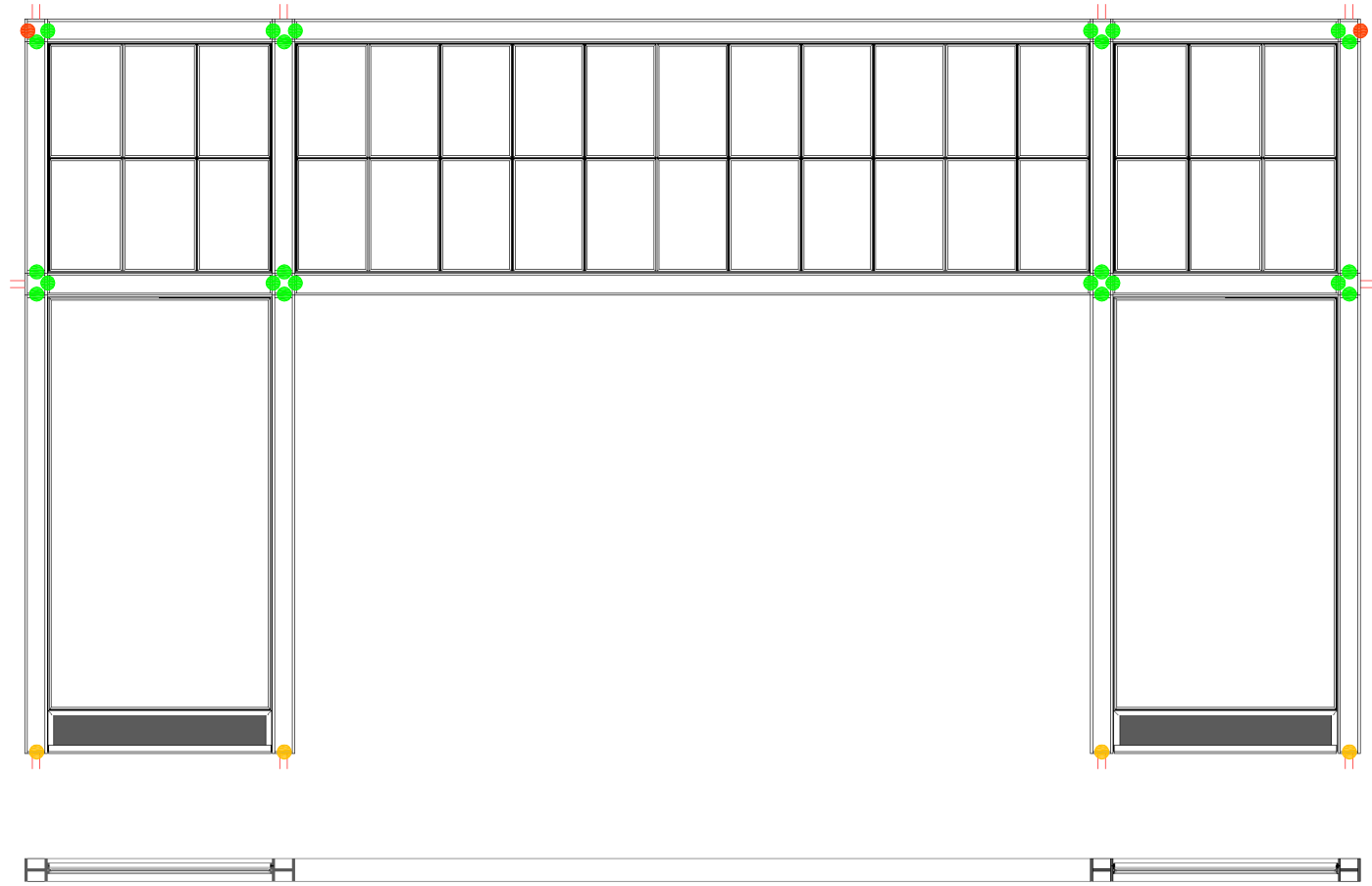
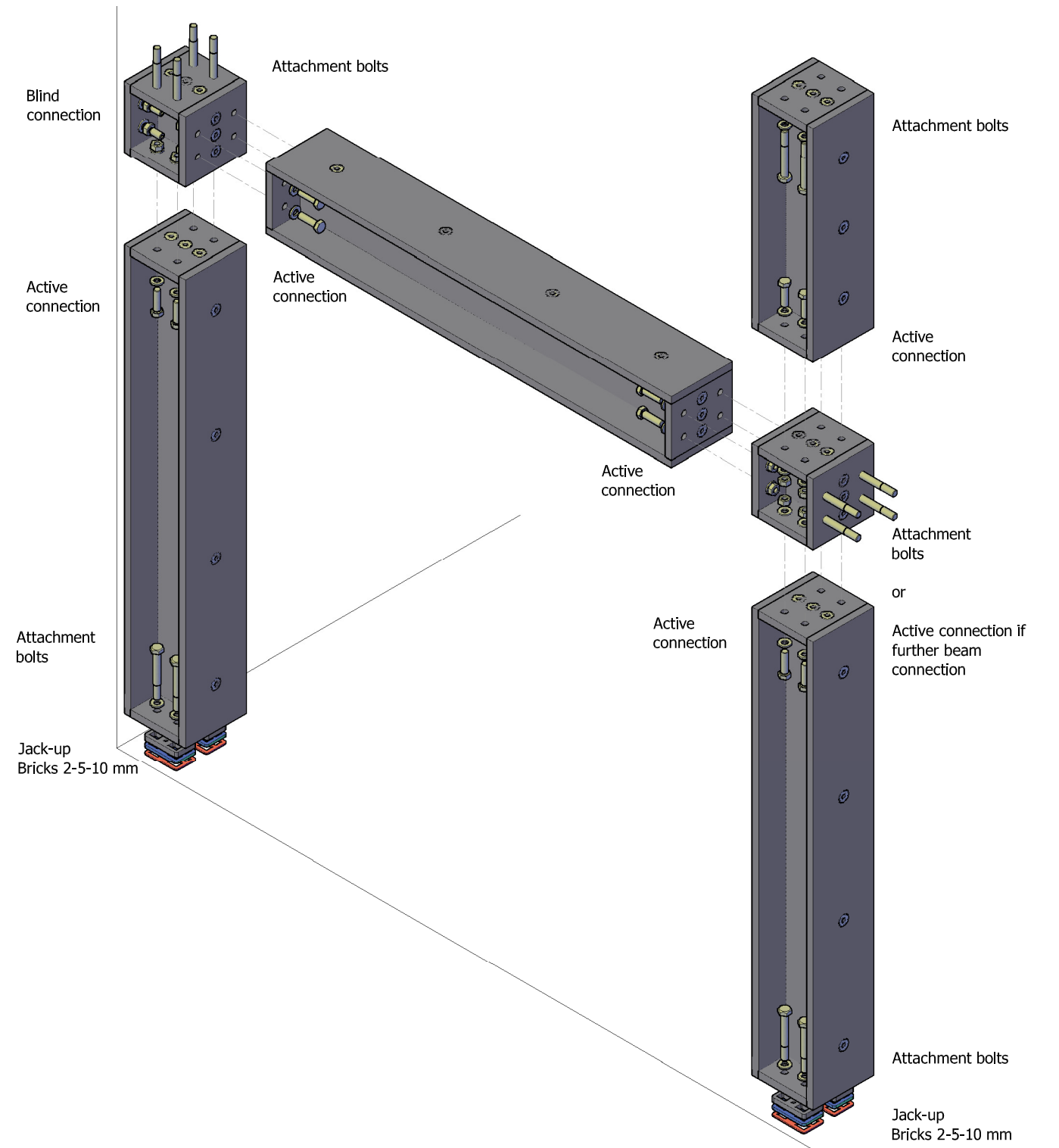


**Façade construction example**



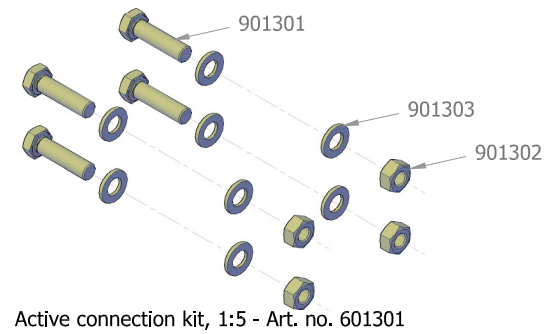
**Principle overview**

Ass. no. 201305



● **Active connection (Connects HEB beam and HEB cube)**

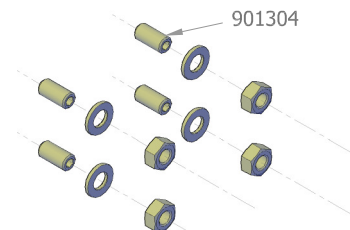
- Package:  
 4 pcs Fully Threaded Hex Cap M12x45 DIN 933  
 4 pcs Hex Nut M12 DIN 934  
 8 pcs Flat Washer M12 D24 DIN 125



Active connection kit, 1:5 - Art. no. 601301

● **Blind connection (Connects to nothing)**

- Package:  
 4 pcs Socket Set Screw Flat Point M12x25 DIN 913  
 4 pcs Hex Nut M12 DIN 934  
 4 pcs Flat Washer M12 D24 DIN 125

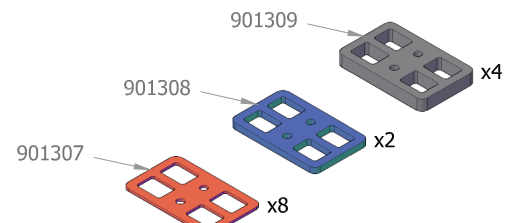


Blind connection kit, 1:5 - Art. no. 601302

● **Floor connection**

- Package:  
 8 pcs 2mm Adjustment Panels 50x80 mm (red)  
 2 pcs 5 mm Adjustment Panels 50x80 mm (blue)  
 4 pcs 10 mm Adjustment Panels 50x80 mm (black)

Maximum load 2000 kg




Floor connection kit, 1:5 - Art. no. 601303

Connection to existing constructions see detail drawing no. 301301

Assumption: Solid and stable surrounding structures  
 Attachment bolts according to local conditions

Important: Level the construction accurately both horizontal and vertical

Sign.	Appr.	Date	Project	Description	Format	Scale
CS	-	12-11-2015	HEB	Assembly	A4	1:50, 1:10
 Finlandsvej 12 DK-5700 Svendborg +45 91 55 33 55 kontakt@dyfa.dk www.dyfa.dk					Drawing no.	
					201305	
					Revision	Revision date
					-	-